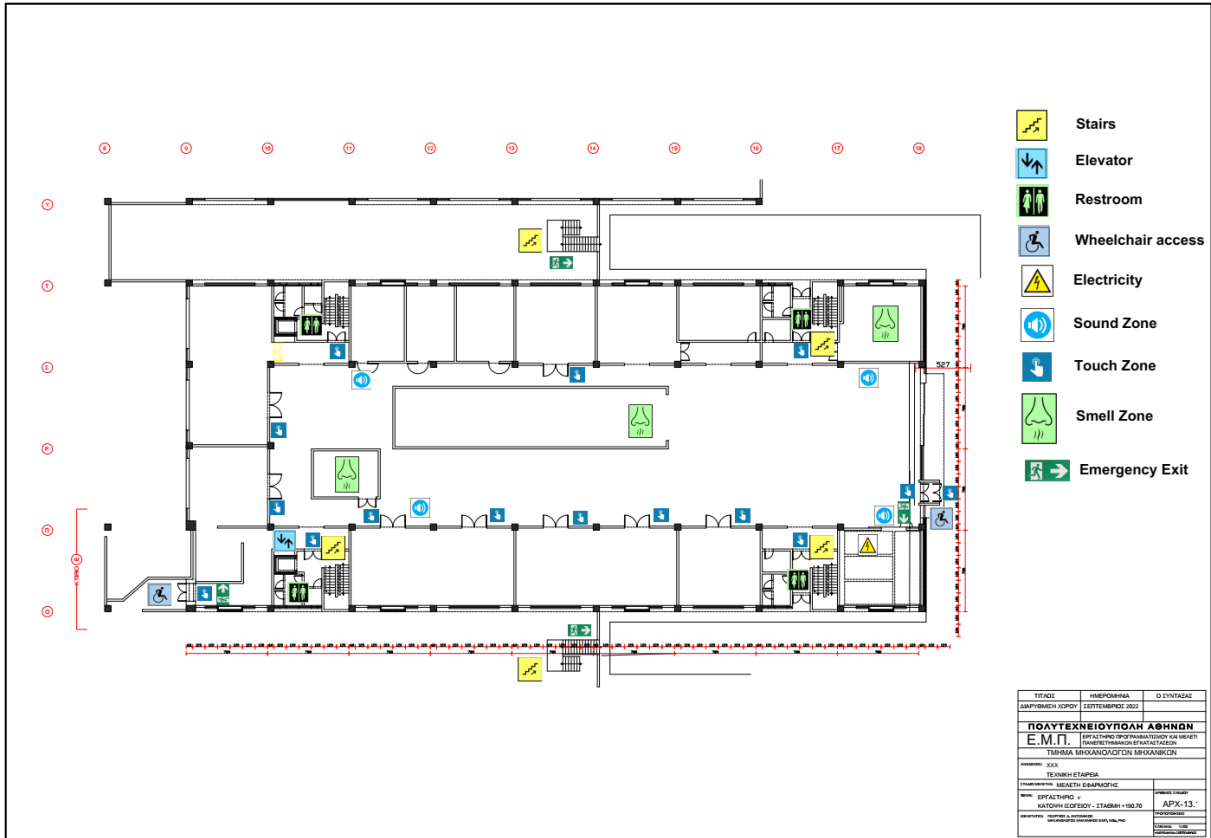


# e-Nable Greece Laboratory

-

## Sensory Map



## Visual Elements

The building has clear building signs which show entry and exit points together with laboratory locations and essential room positions.

Building administrators ledge red specific routes for those who need easy access to the facilities.

Large visual markers for key areas like lecture halls and labs.

## Sound Zones

The laboratories together with machinery rooms exist as areas that produce excessive noise.

Quiet zones (e.g., study rooms, libraries, offices).

Moderate sound zones (e.g., hallways, communal areas).

## Touch Zones

Different surface textures exist throughout the building specifically on handrails, doors and tactile flooring near stairs.

Physical interaction areas throughout the building include doors alongside buttons and handles.

## Smell Zones

Cafeterias or food-related areas.

Laboratories with potential chemical scents.

## Emergency Exit

Within every area you will find visible marks which indicate the exit points for building evacuation. The facility has placed carefully marked points which provide both safety and easy passage particularly in emergency situations. The building has placed important exit paths directly into sight from every main area and distributed them across the building to enable quick access during emergencies.

## Stairs and Elevators

The building provides its users with stairs and elevators as essential accessibility features. Mid-stair indicators help people detect stair steps due to their touch-sensitive features and distinctive color schemes while all elevators maintain ideally placed positions around principal walkways. The accessible facilities let visitors move between floors since they provide elevators that everyone regardless of mobility limitations can use.

## Accessibility

This building offers full accessibility through its wheelchair ramps alongside wide doorways and elevators for visitors who need mobility accommodation. Every section of the facility has access while textured floors guide stairways and easy-to-understand directional indications exist for pathways.









## Electricity and Power Zones

The building contains designated markings that display the presence of electrical equipment and high-power zones in specific areas particularly machinery and laboratory spaces. These designated zones warrant safety attention since individuals requiring awareness about electrical equipment and specific maintenance personnel need to recognize them. Users should refer to the electricity symbol during their walk to avoid designated risk areas but monitor these spots when necessary to be alert about electric dangers.

## Restroom

Throughout the building visitors will find restroom areas that are properly displayed so everyone can access them.

## Visual signs

-  = Sound Zones
-  = Touch Zones
-  = Smell Zones
-  = Emergency Exit
-  = Stairs and Elevators
-  = Accessibility
-  = Electricity and Power Zones
-  = Restroom

## Description

A sensory map has been designed to deliver an accessible experience to students and guests of e-Nable Greece Laboratory. The mapping system spotlights important sensory areas which affect environmental navigation for different users. Moreover, the design features comprehensive attention to visual elements as well as sound elements and touch elements and smell elements to achieve ease of accessibility and comfort.